

# 2005 Columbia 400

Reg # N40CY

Serial # 41075

Price: \$289,000 with 400 School

Total Time: 1185

Contact:

William Byrd

NexGA Aircraft, Inc.

Office: (336) 665-0300

Cell: (919) 475-6488

william@nexga.com

**NexGA Aircraft, Inc.**

*"Specializing in the Next Generation of General Aviation"*

7680 Airline Rd \* Greensboro, NC 27409 \* (KGSO)

(866) 646-9819 \* (336) 665-0300 \* Fax: (336) 665-0333

www.nexga.com

**William Byrd**

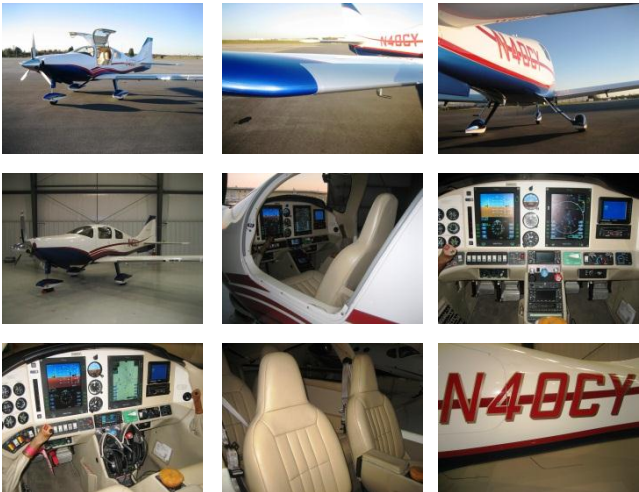
Cell: (919) 475-6488

william@nexga.com

**George Johnson**

Cell: (336) 926-0829

george@nexga.com



**Interior:** Tan Buckskin Leather Seats

**Exterior:** Glacier Blue & Ferrari Red w/ Gold Fire Mist

**Total Time:** 1185 Since New

**Engine Time:** 1185 Since New

**Prop Time:** 1185 Since New

**Annual Due:** March 2013

## Aircraft Details

### Remarks:

This Remarkable, One of a Kind, Fully Loaded 400 is the Perfect Business Tool or Cross Country Bird for the Family. Fly High and Fast with the Peace of Mind & Safety of the Kelly ThermaWing & Hot Prop! Dual WAAS 430's, Active Traffic, XM Weather, TWX 670! Entertain Your Passengers with the FAA Approved PS Engineering Audio Panel & DVD System w/ Sirius Radio. Includes 10+ Ground and Flight School from a Factory Trained Instructor! One Owner, No Damage History, Call for more details!

### Avionics:

Avidyne Entegra FlightMax PFD w/ Flight Director

Avidyne FlightMax EX5000 MFD

Garmin Dual WAAS GNS-430W's

PS Engineering PMA8000-SR Audio Panel w/ Sirius Sat Radio

PS Engineering PAV-80 CD/DVD Player w/ Remote

PS Engineering PVT-801 5.6" LCD Screen

Ryan TCAD 9900BX ACTIVE 24 Mile Traffic

XM Weather

Avidyne TWX 670 Tactical Weather & Lightning Detection System

CMax Electronic Charts

EMax Engine Monitoring

Garmin GTX-330 Mode S Transponder

S-Tec 55X Autopilot w/ Autotrim, GPSS, and Altitude Pre-Select

Mid-Continent Electric AI Indicator w/ Battery Backup

### Equipment:

KELLY AEROSPACE THERMAWING DE-ICING SYSTEM

Hot Prop to maintain power through inadvertent ice encounter

High Altitude Package (Built-In Oxygen and Speed Brakes)

Safety Package EMAX (Engine monitoring) and XM WX

TCM Platinum Engine Upgrade

LoPresti Speed Merchants Boom Beam HID Lighting System

Air/Oil Separator

2 Bose & 2 Light-Speed Noise Cancelling Headsets

Mountain High ALPS Oxygen Mask w/ Microphone & Bose Adap.

PS Engineering Audio Panel/Entertainment System w/ Sirius

Cessna Winterization Kit

Tanis Engine Pre-Heater

RDD Exhaust & Baffle Upgrade

Wireless Tire Pressure Sensor System

Artex ELT-200 121.5 & 243.0 Mhz w/ GPS Output

Factory Cover, Custom Wing Mats & Floor Mats

Columbia Factory Paint, 1 Gallon each of Red, Blue, Gold

**"SPECIFICATIONS SUBJECT TO VERIFICATION UPON INSPECTION"**

"AIRCRAFT SUBJECT TO PRIOR SALE"