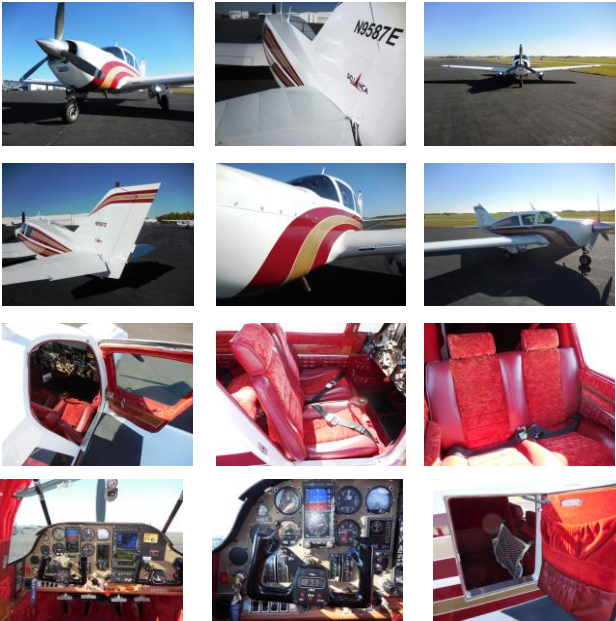


# 1977 Bellanca Super Viking 17-31A

Reg # N9587E  
Serial # 77-32-170  
Price: \$89,000  
Total Time: 2170  
Engine Time: 10 SMOH

Contact:  
**William Byrd**  
NexGA Aircraft, Inc.  
Office: (336) 665-0300  
Cell: (919) 475-6488  
[william@nexga.com](mailto:william@nexga.com)



## NexGA Aircraft, Inc.

"Specializing in the Next Generation of General Aviation"

1060 PTI Drive \* Greensboro, NC 27409 \* (KGSO)  
(866) 646-9819 \* (336) 665-0300 \* Fax: (336) 665-0333

[www.nexga.com](http://www.nexga.com)

**William Byrd**                      **George Johnson**  
Cell: (919) 475-6488              Cell: (336) 926-0829  
[william@nexga.com](mailto:william@nexga.com)              [george@nexga.com](mailto:george@nexga.com)

### Aircraft Details

#### Remarks:

Immaculate, Well Equipped, Super Viking w/ Great Paint!  
Only 10 SMOH and Prop Overhaul! Everything Firewall Forward  
New or Overhauled! Aspen EFD 1000 Pro PFD w/ Synthetic Vision!  
Traffic, S-TEC 30 Autopilot with GPSS! Garmin 530W WAAS!  
XM Weather & Radio, JPI EDM 830 Color Engine Monitor.  
Great IFR Cross Country Machine for Business or the Family.  
Always Hangared, No Damage History, Call us Today for More Info!

#### Avionics:

Aspen EFD 1000 Pro PFD w/ Evolution Synthetic Vision, HSI  
Garmin GNS 530W WAAS GPS/NAV/COMM  
TAWS Terrain Displayed on Garmin 530W  
Garmin GDL 69A XM Weather & Radio  
TIS Traffic  
JPI EDM 830 Color Graphic Engine Monitor  
S-TEC 30 Autopilot w/ Garmin ST-901 GPSS Steering  
Garmin GNC 300XL IFR GPS/COMM  
Garmin GTX 330 Mode S Transponder  
Garmin GMA 340 Audio Panel w/ Intercom and Marker Beacon  
CD Player

#### Equipment:

Pilot & Co-pilot Mic Buttons  
Electric Trim  
Dual Toe Brakes  
LED Nav Lights & Rear Sun Spot Light  
LED Landing Lights  
Pilot Window  
Airwolf Air/Oil Separator  
AUX 15 Gallon Fuel Tank  
New Style Factory Muffler w/ No Recurring AD  
Complete Logbooks and Manuals  
Additional Touch up Paint

**Interior:** Red (8)

**Exterior:** White Overall w/ Maroon & Gold Stripe (2009) (9+)

**Total Time:** 2170 Since New

**Engine Time:** 10 SMOH

**Prop Time:** 10 SPOH

**Useful Load (Approx):** 921 Lbs.

**Annual Due:** April 2015

"SPECIFICATIONS SUBJECT TO VERIFICATION UPON INSPECTION"

"AIRCRAFT SUBJECT TO PRIOR SALE"