

# 2007 Columbia SUPERCHARGED 350SLX



"Specializing in the Next Generation of General Aviation"

1060 PTI Drive \* Greensboro, NC 27409 \* (KGSO)

(866) 646-9819 \* (336) 665-0300 \* Fax: (336) 665-0333

www.nexga.com

William Byrd

George Johnson

Cell: (919) 475-6488

Cell: (336) 926-0829

william@nexga.com

george@nexga.com

Reg # N1411G

Serial # 42556

Price: \$399,000 w/ 350 School

Total Time: 1680

Engine Time: 85 SMOH

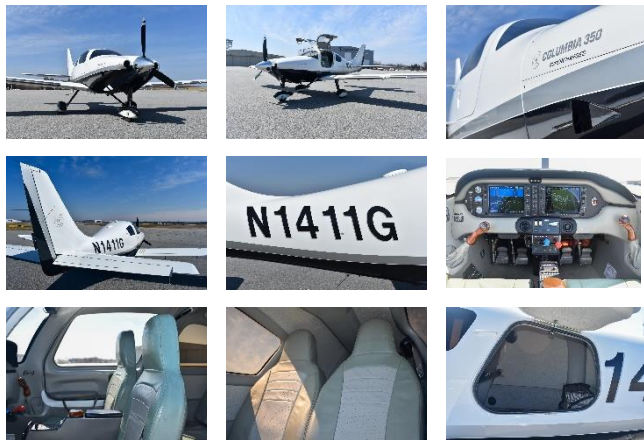
Contact:

William Byrd

Office: (336) 665-0300

Cell: (919) 475-6488

william@nexga.com



## Aircraft Details

Well Maintained, SUPERCHARGED 350SLX! This Fully-Equipped G1000 Columbia 350SLX w/ Air Conditioning & Full TKS Deice is STUNNING! Featuring the Forced Aeromotive Technologies Super Charging System, Over 1500 FPM Climb & 10+ Cruise!!! Less than 100 Hours on the Motor Since Major Overhaul! Always Hangared, & Excellent Maintenance. Fully Equipped w/ 24NM Active Traffic, XM Weather & Radio, Electronic Charts & Checklists, TAWS-B, Stormscope, What More Could You Ask For! Outstanding Paint & Interior Featuring Oregon Aero Sport Seats, One Owner, Sale Includes Ground & Flight Training. This One Won't Last Long, Call Today for More Details.

## Avionics:

Garmin G1000 Fully Integrated Flight Deck w/ READY Pad  
GIA-63 NAV/COM/GPS w/GS #1  
GIA-63 NAV/COM/GPS w/GS #2  
Synthetic Vision Technologies (SVT)  
GCU-476 Keypad Controller "READY Pad"  
GDU-1040 Primary Flight Display (PFD)  
GDU-1044 Multi-Function Display (MFD)  
GDL-69A Flight Information System (FIS) XM Weather & XM Radio  
Avidyne TWX 670 Tactical Weather w/ Real Time Stormscope  
GTX 345R ADS-B In & Out Transponder w/ Traffic & Weather  
GMA-1347 Digital Audio Panel w/Marker Beacon/Intercom  
GFC-700 Autopilot - Go-Around Switch, Electric Trim, A/P Disconnect  
Terrain Awareness System (TAWS-B)  
Digital Engine Monitoring w/ Lean Assist  
Garmin FliteCharts & Digital Checklists  
Traffic Advisory System (TCAD 9900BX / TAS 620 24nm Active Traffic)  
Backup Airspeed, Altimeter & Electric Attitude Indicator  
Mic & Phone Jacks-Pilot/Copilot/Passengers (Bose and Standard)

## Equipment:

Automatic Climate Control System w/ Air Conditioning **Stripe:** Deep Blue  
Full TKS Deice & Hot Prop  
Forced Aeromotive Technologies Super Charging System  
Precise Flight Semi Portable Oxygen  
Oregon Aero Adjustable Sport Seats w/ Lumbar Support  
Air/Oil Separator  
Electrically Inflatable Door Seals  
Speed Brakes  
4 Place Electric Trim-Pilot/Copilot  
Dual Fully Redundant Electrical System with Crosstie Feature  
Vernier Throttle, Prop & Mixture Controls

**Interior:** Grey Buckskin Leather Sport Seats 8

**Exterior:** White w/ Black Pearl & Silver Stripe 8

**Total Time:** 1680 Since New

**Engine Time:** 85 Since Major Overhaul

**Prop Time:** 850 SPOH

**Annual Due:** May 2022

"SPECIFICATIONS SUBJECT TO VERIFICATION UPON INSPECTION"

"AIRCRAFT SUBJECT TO PRIOR SALE"