

2004 Columbia 400

Reg # N515MM

Serial # 41046

Price: \$249,000 with 400 School

Total Time: 1960 SNEW, 450 SFRM

Contact:

William Byrd

NexGA Aircraft, Inc.

Office: (336) 665-0300

Cell: (919) 475-6488

william@nexga.com



"Specializing in the Next Generation of General Aviation"

1060 PTI Drive * Greensboro, NC 27409 * (KGSO)

(866) 646-9819 * (336) 665-0300 * Fax: (336) 665-0333

www.nexga.com

William Byrd

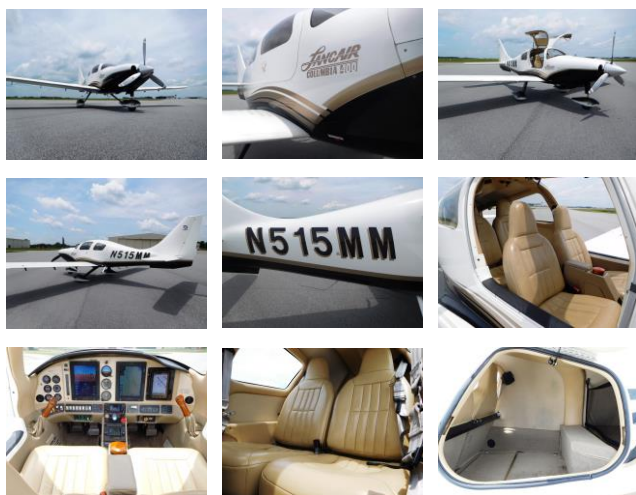
Cell: (919) 475-6488

william@nexga.com

George Johnson

Cell: (336) 926-0829

george@nexga.com



Interior: Tan Buckskin Leather Seats

Exterior: White w/ Black Bottom & Gold stripe

Total Time: 1960 Since New

Engine Time: 450 SFRM

Prop Time: 1165 SPOH

Annual Due: January 2017

Aircraft Details

Remarks:

Beautiful and Fast! Well Equipped with Digital Climate Control, Very Well Maintained, Only 450 Hours on Factory Reman Engine! WAAS Upgrade with Dual WAAS 430's and Avidyne Version 8! Charts, XM, Engine Monitoring & Checklists Displayed on MFD. Includes 10+ Ground and Flight School from a Factory Trained Instructor! Call for more details! Great Value!

Avionics:

Avidyne Entegra FlightMax PFD WAAS (Version 8)
Avidyne FlightMax EX5000 MFD WAAS (Version 8)
Garmin Dual WAAS GNS-430's Nav/Comm/GPS's
Garmin GMA 340 Audio Panel w/ Intercom & 3 Light Marker Beacon
Mode S TIS Traffic
XM Weather
CMax Electronic Charts
EMax Engine Monitoring
Digital Checklists on MFD
Terrain
Garmin GTX-330 Mode S Transponder
S-Tec 55X Autopilot w/ Autotrim, GPSS, and Altitude Pre-Select
Mid-Continent Electric AI Indicator w/ Battery Backup

Equipment:

Digital Climate Control Air Conditioning
High Altitude Package (Built-In Oxygen and Speed Brakes)
Safety Package EMAX (Engine monitoring) and XM WX
Digital Checklist on MFD
Factory Tuned Induction and Exhaust
406Mhz ELT upgrade
Engine Tanis Heater
Winterization Kit
Aerotech™ Paint Protection Kit
Cargo Net
Aircraft Cover
Tow Bar

"SPECIFICATIONS SUBJECT TO VERIFICATION UPON INSPECTION"

"AIRCRAFT SUBJECT TO PRIOR SALE"