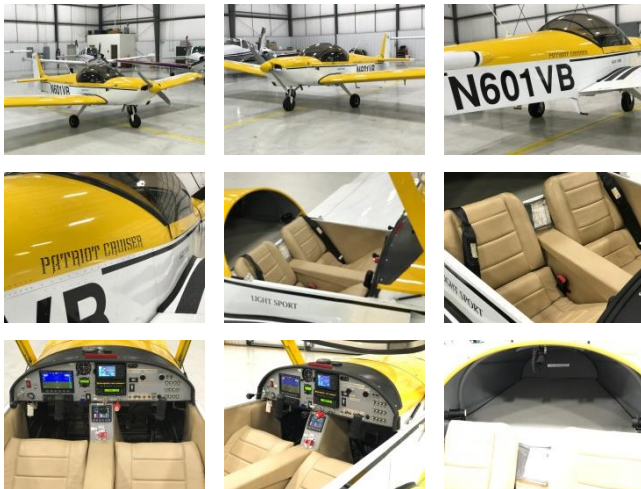


2006 AMD Zodiac CH601XL

Reg # N601VB
Serial # 601-017S
Price: \$57,500
Total Time: 225 SNEW

Contact:
William Byrd
NexGA Aircraft, Inc.
Office: (336) 665-0300
Cell: (919) 475-6488
william@nexga.com



Interior: Tan Interior
Exterior: Yellow & White w/ Black Stripes
Total Time: 225 Since New
Engine Time: Continental O-200; 225 Since New
Prop Time: 225 Since New
Annual Due: October 2017



"Specializing in the Next Generation of General Aviation"

1060 PTI Drive * Greensboro, NC 27409 * (KGSO)
(866) 646-9819 * (336) 665-0300 * Fax: (336) 665-0333

www.nexga.com

William Byrd
Cell: (919) 475-6488
william@nexga.com

George Johnson
Cell: (336) 926-0829
george@nexga.com

Aircraft Details

Remarks:

NICE Low Time Light Sport Zodiac 601XL. Outstandingly Fun And Economical to Fly. Sport Pilot Ready Patriot Cruiser is Fully Certified and built by the Manufacturer, AMD in the USA. One Owner! All the Equipment Needed to Take to the Skies. Cruise Along At Speeds of over 130 MPH climbing out at nearly 1000 Feet Per Minute. Built to Get In and Out in a Hurry, Needs Only About 500 Feet of Runway to Get In and Out. Excellent Visibility With the Bubble Canopy. Popular Continental O-200, 100 HP Engine. Beautiful Condition, Call Today for More Details.

Avionics:

Dynon Avionics EFIS D100
TruTrak Vizion Autopilot w/ Alt Hold, VS & GPSS Steering
Garmin 396 Panel Mounted GPS with Color Moving Map
XM Weather displayed on Garmin 396
Garmin SL-40 Nav/Comm Transceiver
Garmin GMA-340 Audio Panel w/ Intercom and Marker Beacon
Garmin GTX-330 Mode S Transponder
Garmin GI-106A VOR/LOC/Glideslope CDI Indicator
Dynon EMS-D10 Color Graphic Engine Monitor
TIS Mode S Traffic

Equipment:

Light Sport Certified Built by AMD factory (not a homebuilt)
Electric Flaps
Electric Aileron Trim
Electric Elevator Trim
Radio Master Switch
LED Strobe Lights
LED Nav Lights
Parking Brake
ELT
Cabin Heat
Wing Locker Baggage
Dual Throttles

"SPECIFICATIONS SUBJECT TO VERIFICATION UPON INSPECTION"

"AIRCRAFT SUBJECT TO PRIOR SALE"