

# 2005 Columbia 400

Reg # N2528D

Serial # 41523

Price: \$239,000 with 400 School

Total Time: 1235 SNEW

Engine Time: 1235 SNEW

Contact:

William Byrd

NexGA Aircraft, Inc.

Office: (336) 665-0300

Cell: (919) 475-6488

william@nexga.com



*"Specializing in the Next Generation of General Aviation"*

1060 PTI Drive \* Greensboro, NC 27409 \* (KGSO)

(866) 646-9819 \* (336) 665-0300 \* Fax: (336) 665-0333

[www.nexga.com](http://www.nexga.com)

**William Byrd**

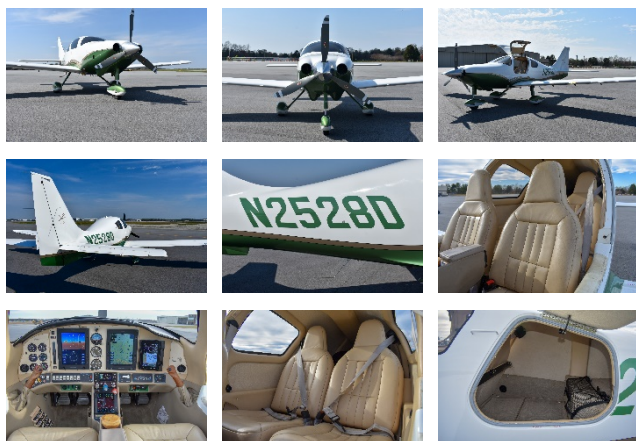
Cell: (919) 475-6488

[william@nexga.com](mailto:william@nexga.com)

**George Johnson**

Cell: (336) 926-0829

[george@nexga.com](mailto:george@nexga.com)



**Interior:** Tan Buckskin Leather Seats

**Exterior:** White w/ Green & Gold Fire Mist Stripe

**Total Time:** 1235 Since New

**Engine Time:** 1235 Since New

**Prop Time:** 15 Since Overhaul

**Annual Due:** October 2020

**Useful Load:** 997 Lbs.

## Aircraft Details

### Remarks:

The Perfect Cross Country Business Tool & Time Traveling Machine for the Family! Cruise Into the Flight Levels Well Over 200 Knots! Utility Category Rated, Dual Carbon Fiber Spars, Dual Electrical Systems, Digital & Analog Instrumentation, Redundancy, Safety by Design, Not by Default. Compressions At Last Annual 75, 77, 78, 76, 74, 76 Garmin GTN 750 WAAS w/ ADS-B Out, 2020 Compliant! Tuned Injectors. Air Conditioned! Digital Climate Control. Active Traffic, Safe Taxi, HID Landing Light, Panel Mounted 796. Great Maintenance History, Clean Logs, No Damage. Includes 10+ Ground and Flight School from a Factory Trained Instructor! Call for more details! Great Value, Won't Last Long!

### Avionics:

Avidyne Entegra FlightMax PFD w/ Flight Director  
Avidyne FlightMax EX5000 MFD  
Garmin GTN-750 #1 WAAS Nav/Comm/GPS  
Garmin GNS-430W #2 WAAS Nav/Comm/GPS  
Garmin GTX-33ES ADS-B Out Transponder  
Garmin GMA 340 Audio Panel Integrated w/ GTN-750  
Panel Mounted Garmin 796  
Ryan 9900BX 24nm Active Traffic  
XM Weather  
CMax Electronic Charts  
EMax Engine Monitoring  
Digital Checklists on MFD  
Terrain  
S-Tec 55X Autopilot w/ Autotrim, GPSS, and Altitude Pre-Select  
Mid-Continent Electric AI Indicator w/ Battery Backup

### Equipment:

Digital Climate Control Air Conditioning  
High Altitude Package (Built-In Oxygen and Speed Brakes)  
Safety Package EMAX (Engine monitoring) and XM WX  
Tan Buckskin Leather Seats  
Digital Checklist on MFD  
Factory Tuned Induction and Exhaust  
HID Xenon Landing Light  
Full Set of Aircraft Covers

**"SPECIFICATIONS SUBJECT TO VERIFICATION UPON INSPECTION"**

**"AIRCRAFT SUBJECT TO PRIOR SALE"**