

# 2001 Columbia 300

Reg # N999LC

Serial # 40032

Price: \$239,000 Includes 300 School

Total Time: 1050 SNEW

Engine: 1050 SNEW; 100 STOH

Contact:

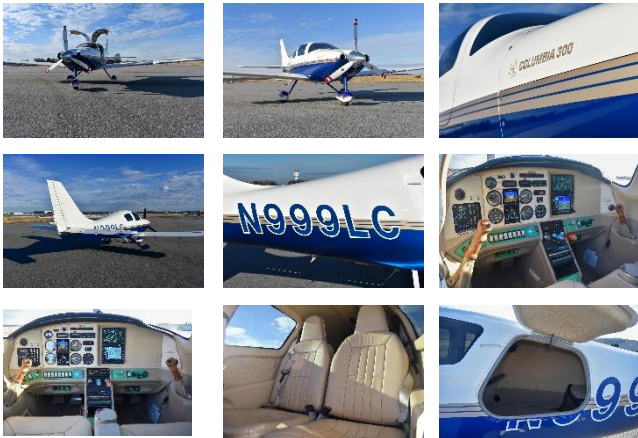
William Byrd

NexGA Aircraft, Inc.

Office: (336) 665-0300

Cell: (919) 475-648

william@nexga.com



**Interior:** Tan Buckskin Leather Seats

**Exterior:** White & Glacier Blue w/ Gold Fire Mist

**Total Time:** 1050 Since New

**Engine Time:** 1050 SNEW; 100 Since Top Overhaul

**Prop Time:** 100 Since Prop Overhaul

**Useful Load:** 1070 Lbs.

**Annual Due:** September 2022

## NexGA Aircraft, Inc.

*"Specializing in the Next Generation of General Aviation"*

1060 PTI Drive \* Greensboro, NC 27409 \* (KGSO)

(866) 646-9819 \* (336) 665-0300 \* Fax: (336) 665-0333

www.nexga.com

William Byrd

Cell: (919) 475-6488

william@nexga.com

George Johnson

Cell: (336) 926-0829

george@nexga.com

### Remarks:

Completely Turn Key and Ready for Action! Excellent Avionics Upgrades Including Avidyne IFD550 WAAS FMS/GPS/NAVCOM With 3D Terrain/Obstacles, Synthetic Vision & WIFI Tablet Connection, S-Tec 55X Autopilot Upgrade with GPSS Steering, Altitude & VS preselect, EDM 930 Color Graphic Engine Monitor Dual Flush Mounted Garmin G5's! Recent Top & Prop Overhaul! Fast & Sleek Cross Country Machine! Beautiful Condition! This is the Pedigree You Are Looking For. Includes Columbia 300 School, Do Not Let This One Fly Away! Call Today for More Details.

### Avionics:

Garmin G5 Flush Mounted Electronic Attitude Indicator  
Garmin G5 Flush Mounted Electronic HSI  
Avidyne IFD550 Premium WAAS FMS/GPS/NAV/COM w/ 3D SVS  
Avidyne AXP322 ADS-B Out Remote Transponder  
S-Tec 55X Autopilot w/ Autotrim, GPSS, and Alt/VS Pre-Select  
FreeFlight ADS-B Traffic & Weather Integrated w/ IFD550  
TAWS-B 3D Terrain & Obstacles  
Garmin MX20 Multi-Function Display  
JPI EDM 930 Color Graphic Engine Monitor w/ Fuel Flow  
Apollo/Garmin SL30 Nav/Com  
Apollo GX55 IFR GPS  
CO Guardian Built in CO2 Detector  
Digital Backup RPM/MP Display

### Equipment:

Factory Tuned Induction and Exhaust  
Reiff Engine Preheater  
Battery Tender  
Pitot Heat  
LoPresti Boom Beam HID Landing Light  
Cabin Fan  
Utility Category Airframe  
Carbon Fiber Dual Wing Spar Construction  
Inertia Reel 4 Place Shoulder Harnesses  
Stainless Steel Lifetime Pushrod Dual Side Stick Controls  
Inflatable Electric Door Seals  
Aircraft Cover  
Stick On Window Tint

**"SPECIFICATIONS SUBJECT TO VERIFICATION UPON INSPECTION"**

**"AIRCRAFT SUBJECT TO PRIOR SALE"**