

# 2001 Columbia 300

Reg # N927MB

Serial # 40031

Price: \$289,000 Includes 300 School

Total Time: 1950

Engine Time: 530

Contact:

William Byrd

NexGA Aircraft, Inc.

Office: (336) 665-0300

Cell: (919) 475-6488

william@nexga.com

# NexGA Aircraft, Inc.

*"Specializing in the Next Generation of General Aviation"*

7680 Airline Rd \* Greensboro, NC 27409 \* (KGSO)

(866) 646-9819 \* (336) 665-0300 \* Fax: (336) 665-0333

www.nexga.com

William Byrd

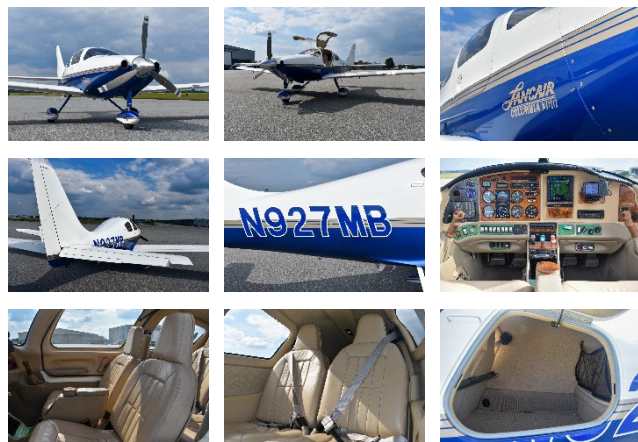
Cell: (919) 475-6488

william@nexga.com

George Johnson

Cell: (336) 926-0829

george@nexga.com



**Interior:** Tan Buckskin Leather

**Exterior:** Glacier Blue w/ Royal Gold Stripe

**Total Time:** 1950 Since New

**Engine Time:** 530 Since Factory Reman

**Prop Time:** 800 Since Prop Overhaul

**Annual Due:** October 2023

**IFR Certification Due:** August 2025

**Useful Load:** 1043 Lbs.

## Aircraft Details

### Remarks:

Completely Turn Key and Ready for Action! Excellent Avionics Upgrades Including Garmin GTN 750 WAAS FMS/GPS/NAVCOM w/ Charts, SafeTaxi & Flightstream 510 Connectivity, S-Tec 55X Autopilot Upgrade with GPSS Steering, Altitude & VS preselect EDM 930 Color Graphic Engine Monitor, Whelen HID Boombeam Landing & Taxi Lights, Dual Vacuum Pumps & Standby Battery System. 530 on Factory Reman Engine! Fast & Sleek Cross Country Machine! Beautiful Condition! Includes Columbia 300 School, Do Not Let This One Fly Away, Call Today to Schedule a Viewing.

### Avionics:

King KCS 55A Slaved HSI

King KI-256 AI w/ Flight Director

S-TEC 55 Autopilot w/ Alt Preselect & GPSS Steering

Garmin GTN 750 WAAS Nav/Com/GPS/Touchscreen FMS

Garmin Charts & SafeTaxi

Garmin Flightstream 510 Cockpit Connectivity

Apollo/Garmin SL30 Nav/Comm

Apollo/Garmin SL15 Audio Panel

Apollo/Garmin SL70 Transponder

Garmin GDL 88 ADS-B In & Out

Garmin GDL 69 XM Weather

JPI EDM 930 Color Graphic Engine Monitor w/ Fuel Flow & Lean Find

Shadin Digital Fuel Management

Garmin aera 496 Portable w/ Custom Mount

WX-500 Weather Detection System Stormscope

PS Engineering PXE7300 CD/FM/AM Player Integrated to Audio Panel

406 Mhz Digital ELT

### Equipment:

Precise Flight 2000 Speed Brakes

Factory Tuned Induction and Exhaust

Dual Vacuum Pumps & Standby Battery System

Utility Category Airframe

Rudder Limiter System

Whelen Boombeam Landing & Taxi Lights

Custom Woodgrain Panel w/ Tablet Mount & Storage Shelf

Courtesy Lights

Custom Aluminum Chocks

**"SPECIFICATIONS SUBJECT TO VERIFICATION UPON INSPECTION"**

**"AIRCRAFT SUBJECT TO PRIOR SALE"**