

2008 Cessna 400

Reg # N912AV

Serial # 411006

Price: \$469,000 w/ 400 School

Total Time: 2350 Since New

Engine Time: 800 Since New

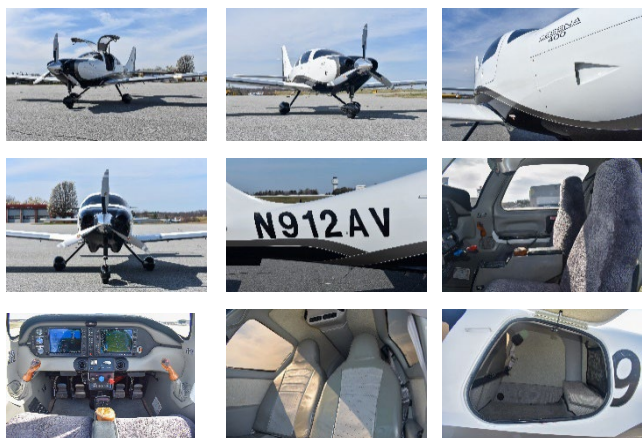
Contact:

William Byrd

Office: (336) 665-0300

Cell: (919) 475-6488

william@nexga.com



Interior: Grey Leather Oregon Aero Sport Seats w/ Pilot/Copilot Seat Sheep Skin Covers

Exterior: Cascade White w/ Black Pearl & Pewter

Total Time: 2350 Since New

Engine Time: 800 Since New

Prop Time: 2350 Since New

Annual Due: August 2025

Useful Load: 981 Lbs.

NexGA Aircraft, Inc.

"Specializing in the Next Generation of General Aviation"

1060 PTI Drive * Greensboro, NC 27409 * (KGSO)

(866) 646-9819 * (336) 665-0300 * Fax: (336) 665-0333

www.nexga.com

William Byrd

Cell: (919) 475-6488

william@nexga.com

George Johnson

Cell: (336) 926-0829

george@nexga.com

Aircraft Details

Beautiful and Fast! Fully Loaded Speed Bird! G1000 Cessna 400SLX! 800 Hours Since New Engine in 2016 w/ New Hoses & Exhaust! Lots of Upgrades, Equipped w/ WAAS, Boom Beam HID Lighting, The Perfect Cross Country Machine for Business or the Family. Thermawing Deice, Air Conditioning, Kelly Aerospace Mods! Stunning Black Pearl "Cascade" Paint Scheme. Synthetic Vision! Equipped w/ GFC-700 Autopilot, Traffic, XM Weather & Radio Garmin SafeTaxi, TAWS-B, Speedbrakes, FliteCharts, Rudder Hold, Oregon Aero Sport Seats & Built In 4 Place Oxygen! Sale Includes Ground & Flight Training. Call Today for More Details.

Avionics:

Garmin G1000 Fully Integrated w/ READY Keypad
GIA-63W WAAS NAV/COM/GPS Equipped w/GS #1
GIA-63W WAAS NAV/COM/GPS Equipped w/GS #2
Garmin Synthetic Vision Technologies (SVT)
GCU-476 Keypad Controller "READY Pad"
GDL-69A Flight Information System (FIS) XM Weather & XM Radio
Avidyne TAS600 24nm Active Traffic System
GTX-335R ADS-B Out Transponder
GMA-1347 Digital Audio Panel w/Marker Beacon/Intercom/Playback
GFC-700 Autopilot - Go-Around Switch, Dual 4 Way Electric Trim
A/P Disconnect & Control Stick Steering Button
Terrain Awareness System (TAWS-B) Garmin Terrain & Obstacles
Digital Engine Monitoring w/ Lean Assist
Garmin Charts & Electronic Checklists & SafeTaxi
Backup Airspeed, Altimeter & Electric Attitude Indicator
Mic & Phone Jacks-Pilot/Copilot/Passengers (Bose and Standard)
Electronic Built in Carbon Monoxide Detector
406 Mhz Digital ELT

Equipment:

Automatic Climate Control System w/ Air Conditioning
Thermawing Deice System & Pitot Heat
Built in 4 Place Oxygen & PreciseFlight Speed Brakes
Oregon Aero Adjustable Sport Seats :
LoPresti Boom Beam HID Landing Light & Taxi Lights
Kelly Aerospace Speed Mods (Exhaust & A/C Scoop +5-8 Knots)
Kelly Aerospace Heat Exchanger & A/C Duct Upgrade STC
Mountain High Oxygen Conserver & Battery Minder
Rudder Hold
Rosen Sunvisors
Electrically Inflatable Door Seals
Dual Fully Redundant Electrical System with Crosstie Feature
Vernier Throttle, Prop & Mixture Controls

"SPECIFICATIONS SUBJECT TO VERIFICATION UPON INSPECTION"

"AIRCRAFT SUBJECT TO PRIOR SALE"